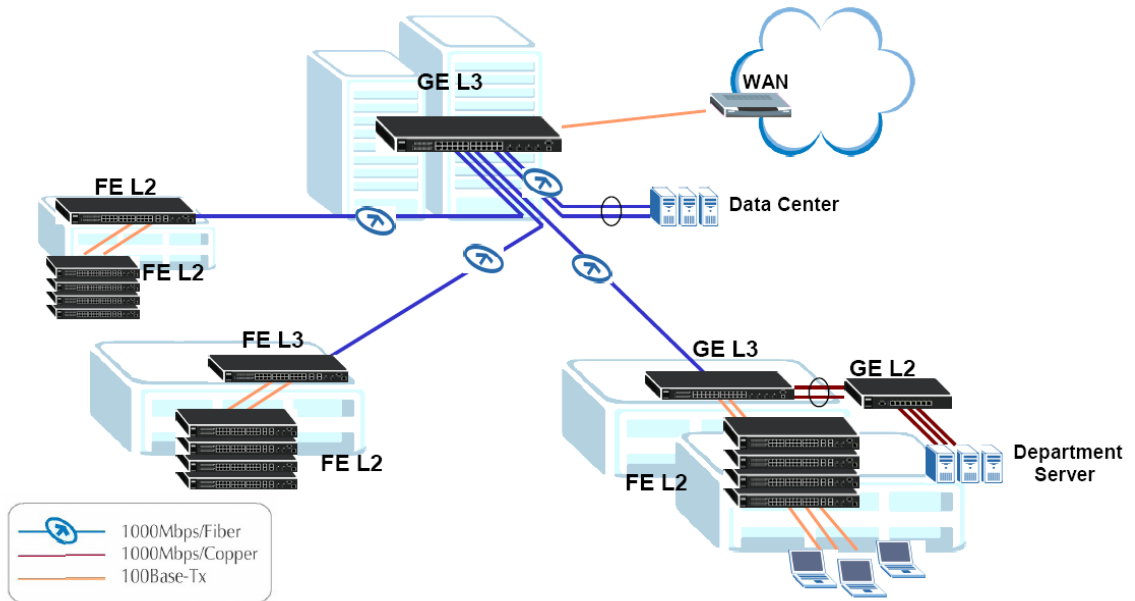
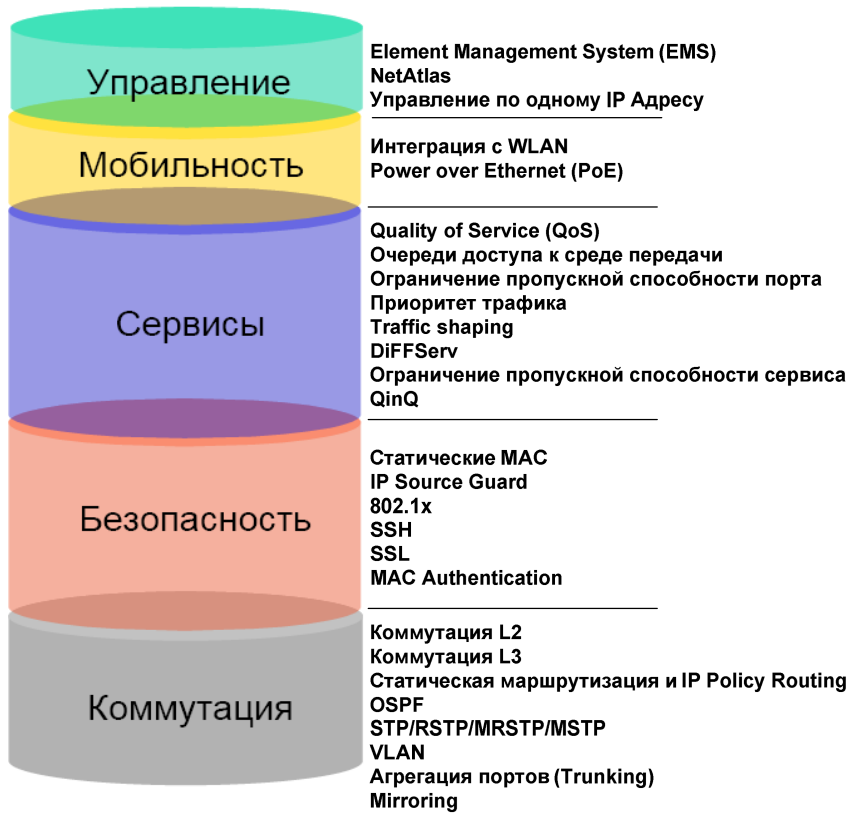


1



1 –



2 –

ZyXEL

- HTTP (HyperText Transfer Protocol, Web-

HTTP

- RS-232

(CLI).

RS-232

- Telnet

- SNMP (Simple Network Management Protocol, v1-v2-v3)

SNMP

MIB

MIB ZyXEL.

ZyXEL NetAtlas.

- FTP

FTP-

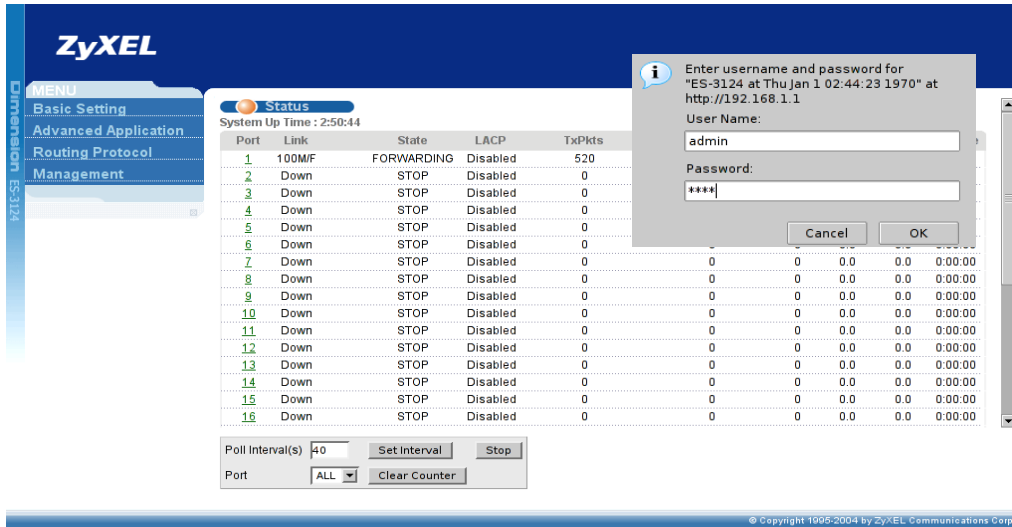
- ras –

(

);

- rom-0 – ;
- config-0 – .

WEB



3 – WEB

WEB

HTTP

(User Name): admin.

(Password): 1234.

(, LACP, / ,
/ , /
Kbytes,).

Basic Settings.

System Info ,

, , - .

General Setup

. : Daytime (RFC 867), Time
(RFC-868) NTP (RFC-1305).

Switch Setup

VLAN (port-based 802.1q), IGMP Snooping,

GARP

802.1p

IP Setup

(IP-
DHCP Client) Management VLAN
(VLAN, c
IP- VLAN

Port Setup

SMT

Bootp/TFTP

ATMOS.

Telnet

Ethernet.

IP

FTP

FTP

telnet.

– admin.

SSH, HTTPS, SFTP

telnet, Web, FTP,

TFTP

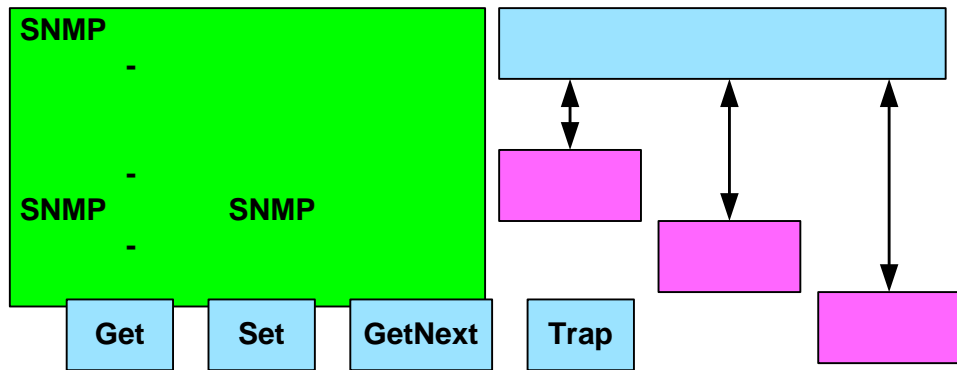
FTP

ZyXEL

BOOT/TFTP

Ethernet.

SNMP



4 -

SNMP (Simple Network Management Protocol/)

(,).
SNMP

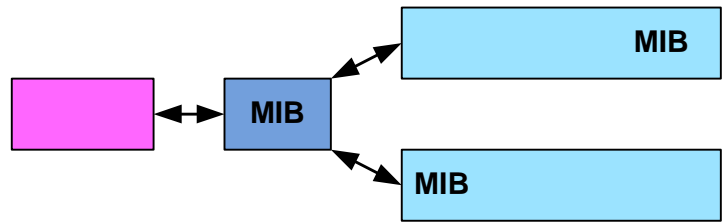
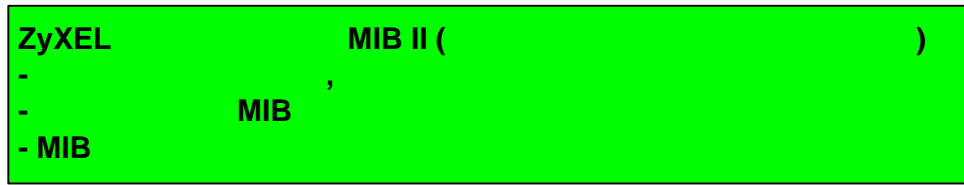
, . SNMP
TCP/IP UDP

SNMP : Get, GetNext, Set Trap.

SNMP
SNMP

(, telnet . .)

SNMP



5 – (MIB)

(MIB). MIB

MIB, SNMP,

MIB

MIB, MIB II, RFC 1213

171 (

TCP, IP, UDP, SNMP)

« »

« ».

SNMP

« - ».

1. Get ()

(Network Management System – NMS)

2. GetNext ()

NMS

1 SNMP, NMS

«Get»,

«GetNext».

3. Set ()

NMS

4. Trap ()

NMS

MIB,

MIB

ZyNOS

Web-

(CLI –

Command Line Interface).

telnet ssh (

),

1.

2.

HyperTerminal (> > hypertrm).

COM,

« » 9600 (115200,

), 8, , 1, .

3.

« »

HyperTerminal.

Bootbase,

ZyNOS,

Bootbase:

ZyNOS:

:

4. ZyNOS: admin, 1234.

5.

,

.

('#' - '>' -
).

enable ('>' '#')

disable ('#' '>').

6.

help.

:

, ping, traceroute.

7.

show ha, [tab], [enter].

?

(

help). show hardware-

monitor

:

,

,

.

ALM,

.

CPU?

8.

,

enable

1234.

().

help

[Esc]

.

.

9. show? ().
- show. show ? ().
- , show.
10. , – running-config.
- show ru, [tab] ()
- [Enter].
- .
- .
11. erase running-config.
12. write memory.
- , [Tab],
- .
13. show ip.
- IP- Management?
- IP- IP- - ?
14. conf[tab][enter].
- help .
- .
- :
- , IP- Management,
- ip address. IP- ,
- VLAN, vlan
- < _VLAN>.

